



2025-26 PRICELIST

THE FOUNDATION FOR GROWING EXCELLENCE



Growing Beyond Boundaries: JLPN's Next Chapter

Dear Valued Grower,

For four generations, JLPN has proudly evolved into a reliable industry leader in providing exceptional deciduous field-grown seedlings, container-grown seedlings, and rooted cuttings. Like a mature oak that continues to develop new branches, our company has always understood that growth is not just a principle we apply to our products—it's the foundation of our business philosophy.

Your needs and feedback have always guided our path forward. That's why we're excited to announce our evolution into grafted trees, tissue culture liners, and conifers. This expansion represents not just new product lines, but our commitment to growing alongside you and anticipating the future needs of the industry. We would like to hear about the varieties you are needing a consistent supply on.

In this modern horticultural landscape, we find ourselves much like smartphone users navigating constant updates—just when you've mastered one system, there's something new and improved on the horizon! The difference is, while technology often leaves us scratching our heads, our evolutionary steps are designed with clarity and purpose, ensuring you're never left behind as we advance together.

Our annual investments in automation reflects this forward-thinking approach and this year, JLPN will hold pricing on container seedlings and rooted cuttings. By embracing innovative technologies throughout our growing and processing systems, we're enhancing consistency, quality, and efficiency—allowing us to focus our expertise where it matters most: developing the exceptional plant material you've come to expect from JLPN. This provides a product that our customers will make more profit on as the trees survive and thrive to their full potential.

None of this growth would be possible without your continued trust and partnership. We're deeply grateful for your business through the years and for challenging us to reach new heights. As we branch out into these exciting new territories, we remain rooted in the same values of quality, integrity, and service that have defined JLPN for generations.

Our family appreciates and wants to extend our deepest gratitude for the growers who rely on us to deliver every year, giving us an opportunity to show our appreciation through value added products and service.

Here's to growing together,

John L. Lewis

A handwritten signature in blue ink that reads "John L. Lewis".

NURSERY LOCATION: 5440 State Street • Salem, Oregon 97301
MAILING ADDRESS: 1118 Lancaster Drive NE #409 • Salem, Oregon 97301
PHONE: 1-877-490-7844, 503-373-9781 • FAX: 503-373-9876 • E-MAIL: info@jlpnliners.com



ORDER DETAILS

Minimum Order \$1,000 U.S.
\$2,500 International
25% Deposit required to secure order
Credit Card payment surcharge 2.75%

\$100 Per Wood Packing Crate
\$75 fee for Phytosanitary Certificate
10% surcharge on all international orders
10% surcharge for root washing

5% Discount on spring orders- Prepay
by Nov. 1st
Deposit on Anderson Band Pots \$.18
Deposit on Anderson HD Poly flats \$3.50

Visit www.jlpliners.com for additional information and our Term and Conditions

						*5,000 Qty. Minimum	
Latin Name	Common Name	Size	Type	1-499	500+	Royalty	B-grade*
<i>Acer buergerianum</i>	Trident Maple	ABP	ABP	\$2.87	\$2.59		
<i>Acer campestre</i>	Hedge Maple	1/8"	Field	\$1.48	\$1.23		\$0.74
		3/16"	Field	\$1.59	\$1.33		\$0.80
		1/4"	Field	\$1.73	\$1.45		\$0.87
		3/8"	Field	\$1.91	\$1.59		\$0.95
<i>Acer ginnala flame</i>	Flame Amur Maple	1/8"	Field	\$1.59	\$1.32		\$0.79
		3/16"	Field	\$1.73	\$1.45		\$0.87
		1/4"	Field	\$1.88	\$1.55		\$0.93
		3/8"	Field	\$1.95	\$1.67		\$1.00
<i>Acer griseum</i>	Paperbark Maple	6-12"	ABP	\$4.10	\$3.80		
		12-18"	ABP	\$4.42	\$4.10		
		18-24"	ABP	\$4.73	\$4.42		
		2-3'	ABP	\$5.19	\$4.74		
		3-4'	ABP	\$5.69	\$5.19		
<i>Acer palmatum</i>	Green Japanese Maple	1/8"	ABP	\$2.12	\$1.88		
		3/16"	ABP	\$2.32	\$2.12		
		1/4"	ABP	\$2.46	\$2.32		
<i>Acer palmatum 'atropurpureum'</i> <i>JLPN Select</i>	Red Japanese Maple	6-12"	ABP	\$2.68	\$2.25		
		12-18"	ABP	\$2.93	\$2.59		
		18-24"	ABP	\$3.21	\$2.79		
		2-3'	ABP	\$3.62	\$3.01		
		3-4'	ABP	\$3.96	\$3.34		
<i>Acer palmatum 'Hot Chana'™</i>	Hot Chana Japanese Maple™ 	gallon	graft	\$12.95	\$12.95	\$2.80	
<i>Acer palmatum 'Metamorphosa'®</i>	Metamorphosa Japanese Maple® 	gallon	graft	\$12.95	\$12.95	\$2.80	
<i>Acer palmatum 'Shishigashira'</i>	Shishigashira Japanese Maple	gallon	graft	\$12.95	\$12.95		
<i>Acer platanoides</i>	Norway Maple	1/8"	Field	\$1.42	\$1.21		\$0.73
		3/16"	Field	\$1.51	\$1.27		\$0.76
		1/4"	Field	\$1.62	\$1.37		\$0.82
		3/8"	Field	\$1.75	\$1.48		\$0.89
<i>Acer r. x freemanii 'Armstrong'</i>	Armstrong	RC	RC	\$2.74	\$2.27		
		RC 1-3"	RC	\$2.21	\$1.83		
<i>Acer r. x freemanii 'Autumn Blaze'®</i>	Autumn Blaze® (ppn 4864)	RC	RC	\$2.74	\$2.27	\$1.00	
		RC 1-3"	RC	\$2.21	\$1.83	\$1.00	
<i>Acer r. x freemanii 'Autumn Fantasy'®</i>	Autumn Fantasy® (ppn 7655)	RC	RC	\$2.74	\$2.27	\$0.90	
		RC 1-3"	RC	\$2.21	\$1.83	\$0.90	
<i>Acer r. x freemanii 'Celebration'®</i>	Celebration® (ppn 7279)	RC	RC	\$2.74	\$2.27	\$0.95	
		RC 1-3"	RC	\$2.21	\$1.83	\$0.95	
<i>Acer r. x freemanii 'Sienna Glen'®</i>	Sienna Glen® (ppn 11322)	RC	RC	\$2.74	\$2.27	\$1.00	
		RC 1-3"	RC	\$2.21	\$1.83	\$1.00	
<i>Acer rubrum</i>	Red Maple	12-18"	Field	\$1.33	\$1.12		\$0.67
		18-24"	Field	\$1.48	\$1.23		\$0.74
		2-3'	Field	\$1.65	\$1.37		\$0.82
		3-4'	Field	\$1.86	\$1.55		\$0.93
<i>Acer rubrum 'Autumn Flame'</i>	Autumn Flame (TM 1,041,020)	RC	RC	\$2.74	\$2.27		
		RC 1-3"	RC	\$2.21	\$1.83		

Premium Conifers Grown in Plug Cells



JLPN started growing premium conifer seedling plugs to create wins for our customers. These contained-cell-grown conifer liners will eliminate the death loss and transplant shock issues growers face with bareroot conifer seedling liners. Our goal is to provide the best quality, in-demand conifer species in volume. If there is a variety you are interested in not on our list, reach out to us and let us know what you are looking for. Take a look at our current conifer listings and please let us know if you have any questions. We are excited to get this new product line into your hands.



						*5,000 Qty. Minimum	
Latin Name	Common Name	Size	Type	1-499	500+	Royalty	B-grade*
<i>Acer rubrum</i> 'Brandywine'	Brandywine	RC	RC	\$2.74	\$2.27		
		RC 1-3"	RC	\$2.21	\$1.83		
<i>Acer rubrum</i> 'Burgundy Belle'®	Burgundy Belle® (pp7222)	RC	RC	\$2.74	\$2.27	\$0.90	
		RC 1-3"	RC	\$2.21	\$1.83	\$0.90	
<i>Acer rubrum</i> 'Marmo'	Marmo	RC	RC	\$2.74	\$2.27		
		RC 1-3"	RC	\$2.21	\$1.83		
<i>Acer rubrum</i> 'October Glory'®	October Glory® (ppn 2116)	RC	RC	\$2.74	\$2.27	\$0.50	
		RC 1-3"	RC	\$2.21	\$1.83	\$0.50	
<i>Acer rubrum</i> 'Red Sunset'®	Red Sunset® (TM 863,972)	RC	RC	\$2.74	\$2.27	\$1.00	
		RC 1-3"	RC	\$2.21	\$1.83	\$1.00	
<i>Acer rubrum</i> 'Somerset'	Somerset	RC	RC	\$2.74	\$2.27		
		RC 1-3"	RC	\$2.21	\$1.83		
<i>Acer rubrum</i> 'Summer Red'®	Summer Red®	RC	RC	\$2.74	\$2.27	\$0.50	
		RC 1-3"	RC	\$2.21	\$1.83	\$0.50	
<i>Acer rubrum</i> 'Sun Valley'	Sun Valley	RC	RC	\$2.74	\$2.27		
		RC 1-3"	RC	\$2.21	\$1.83		
<i>Acer saccharinum</i> (Silver)	Silver Maple	1/8"	Field	\$1.45	\$1.20		\$0.72
		3/16"	Field	\$1.56	\$1.31		\$0.79
		1/4"	Field	\$1.71	\$1.43		\$0.86
		3/8"	Field	\$1.74	\$1.56		\$0.94
<i>Acer saccharum</i> (Sugar)	Sugar Maple	1/8"	Field	\$1.63	\$1.37		\$0.82
		3/16"	Field	\$1.91	\$1.59		\$0.95
		1/4"	Field	\$2.04	\$1.71		\$1.03
		Plug	Plug	\$1.65	\$1.35		
<i>Acer tataricum</i>	Tatarian Maple	6-12"	Field	\$1.66	\$1.52		\$0.91
		12-18"	Field	\$1.91	\$1.59		\$0.95
		18-24"	Field	\$2.20	\$1.84		\$1.10
		2-3'	Field	\$2.50	\$2.09		\$1.25
<i>Amelanchier canadensis</i>	Shadblow Serviceberry	12-18"	Field	\$1.74	\$1.45		\$0.87
		18-24"	Field	\$1.88	\$1.55		\$0.93
		2-3'	Field	\$2.00	\$1.67		\$1.00
<i>Amelanchier laevis</i>	Allegheny Serviceberry	12-18"	Field	\$1.73	\$1.45		\$0.87
		18-24"	Field	\$1.88	\$1.55		\$0.93
		2-3'	Field	\$2.00	\$1.67		\$1.00
<i>Amelanchier lamarckii</i>	Lamarcki Serviceberry	12-18"	Field	\$1.73	\$1.45		\$0.87
		18-24"	Field	\$1.88	\$1.55		\$0.93
		2-3'	Field	\$2.00	\$1.67		\$1.00
<i>Amelanchier x grandiflora</i> 'Autumn Brilliance'	Autumn Brilliance Serviceberry	TC	Plug	\$4.25	\$3.95	\$0.90	
		RC	RC	\$3.34	\$2.86	\$0.90	
<i>Betula jacquemontii</i>	Whitebark Himalayan Birch	RC	RC	\$2.91	\$2.44		
<i>Betula nigra</i> 'Dura Heat'®	Dura Heat® River Birch	RC	RC	\$2.91	\$2.43	\$0.90	
<i>Betula nigra</i> 'Heritage'®	Heritage® River Birch	RC	RC	\$2.91	\$2.43	\$0.25	
<i>Betula nigra</i> 'Clumps'	Select River Birch Clumps	Clumps	Clumps	\$4.37	\$3.63		
<i>Betula nigra</i> 'Select'	Special Select River Birch	12-18"	Field	\$1.42	\$1.10		\$0.66
		18-24"	Field	\$1.54	\$1.28		\$0.77
		2-3'	Field	\$1.62	\$1.36		\$0.82
		3-4'	Field	\$1.78	\$1.49		\$0.89
<i>Betula papyrifera</i>	Paper Birch	12-18"	Field	\$1.42	\$1.10		\$0.66
		18-24"	Field	\$1.54	\$1.28		\$0.77
		2-3'	Field	\$1.62	\$1.36		\$0.82
		3-4'	Field	\$1.78	\$1.49		\$0.89
<i>Betula pendula</i>	Weeping European White Birch	12-18"	Field	\$1.42	\$1.10		\$0.66
		18-24"	Field	\$1.54	\$1.28		\$0.77
		2-3'	Field	\$1.62	\$1.36		\$0.82
		3-4'	Field	\$1.78	\$1.49		\$0.89

B-Grade Seedlings



This year JLPN

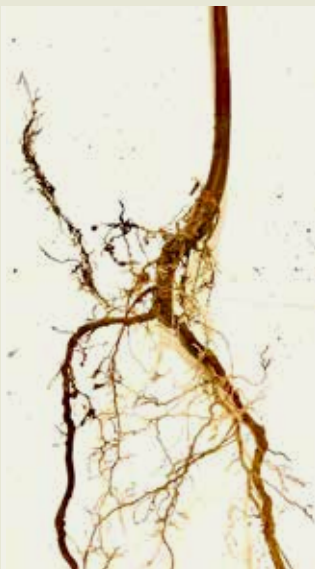
is offering B-Grade field grown seedlings for land reclamation and reforestation productions. These plants are all viable and healthy, but do not adhere to guidelines of the ANLA standards for tree grades and suitability for the landscape (primarily the roots). They are a viable tree with a root and a top, that will survive if watered and handled properly.

B-Grades will HAVE:

- A viable root and top, meaning it will survive and grow
- A general grade for height or caliper, not both, and not exact
- Potentially forked or broken tops
- A root that could be J'd, forked, crooked, or Curly-Q'd
- A strong resemblance to the Charlie Brown Christmas Tree Pre-decoration
- To be ordered in quantities of 5,000 or more

B-Grades will possibly NOT:

- Meet ANLA standards
- Have root systems suitable for nursery landscape and retail market
- Have straight roots
- Have perfect leaders
- Have a chance of turning into the wonderful version Charlie Brown Christmas tree when it's all pretty and decorated
- Be sold in quantities less than 5,000



B-Grade Acer rubrum




B-Grade Acer rubrum



B=Grade Acer rubrum



B Grade Malus

Latin Name	Common Name	Size	Type	1-499	500+	Royalty	B-grade*
<i>Betula populifolia</i>	White Spire Birch	12-18"	Field	\$1.42	\$1.10		\$0.66
		18-24"	Field	\$1.54	\$1.28		\$0.77
		2-3'	Field	\$1.62	\$1.36		\$0.82
		3-4'	Field	\$1.78	\$1.49		\$0.89
<i>Betula x 'Alvazam'™</i>	Avalanche Birch™ 	TC	Plug	\$3.85	\$3.85	\$2.60	
<i>Carpinus betulus</i>	European Hornbeam	1/8"	ABP	\$2.59	\$2.17		
		3/16"	ABP	\$2.84	\$2.36		
		1/4"	ABP	\$3.03	\$2.51		
<i>Carpinus caroliniana</i>	American Hornbeam	1/8"	ABP	\$2.72	\$2.31		
		3/16"	ABP	\$2.85	\$2.36		
<i>Cedrus deodara</i>	Himalayan Cedar	Plug	Plug	\$0.90	\$0.75		
<i>Celtis occidentalis</i>	Hackberry	1/8"	Field	\$1.42	\$1.18		\$0.71
		3/16"	Field	\$1.54	\$1.28		\$0.77
		1/4"	Field	\$1.68	\$1.40		\$0.84
		3/8"	Field	\$1.82	\$1.52		\$0.91
		1/8"	ABP	\$2.22	\$1.85		
		3/16"	ABP	\$2.56	\$2.15		
<i>Cercidiphyllum japonicum</i>	Katsura Tree	12-18"	ABP	\$2.59	\$2.18		
		18-24"	ABP	\$2.72	\$2.30		
		2-3'	ABP	\$3.16	\$2.65		
		3-4'	ABP	\$3.61	\$3.01		
<i>Cercis canadensis</i>	Eastern Redbud	1/8"	ABP	\$2.37	\$1.98		
		3/16"	ABP	\$2.71	\$2.25		
		1/4"	ABP	\$3.11	\$2.41		
		Plug	Plug	\$1.65	\$1.35		
<i>Cladrastis lutea</i>	American Yellowwood	6-12"	ABP	\$2.97	\$2.49		
		12-18"	ABP	\$3.25	\$2.71		
		18-24"	ABP	\$3.62	\$3.07		
<i>Cornus florida</i>	Flowering Dogwood	1/8"	ABP	\$2.64	\$2.04		
		3/16"	ABP	\$2.70	\$2.25		
		1/4"	ABP	\$3.15	\$2.46		
<i>Cornus florida 'Cherokee Chief'</i>	Cherokee Chief Dogwood	graft	Gallon	\$12.95	\$12.95		
<i>Cornus florida 'Cloud Nine'</i>	Cloud Nine Dogwood	graft	Gallon	\$12.95	\$12.95		
<i>Cornus florida rubra</i>	Pink Flowering Dogwood	graft	Gallon	\$12.95	\$12.95		
<i>Cornus kousa chinensis</i>	Chinese Dogwood	1/8"	ABP	\$2.46	\$2.04		
		3/16"	ABP	\$2.71	\$2.25		
		1/4"	ABP	\$2.95	\$2.46		
<i>Cornus kousa 'Celestial Shadow'</i>	Celestial Shadow Dogwood	graft	Gallon	\$12.95	\$12.95		
<i>Cornus kousa 'Summer Fun'</i>	Summer Fun Dogwood	graft	Gallon	\$12.95	\$12.95		
<i>Cotinus coggygria 'Royal Purple'</i>	Royal Purple' Smoketree	RC	RC	\$3.07	\$2.62		
<i>Crataegus phaenopyrum</i>	Washington Hawthorne	3/16"	Field	\$1.62	\$1.37		\$0.82
		1/4"	Field	\$1.82	\$1.52		\$0.91
<i>Diospyros virginiana</i>	American Persimmon	1/8"	Field	\$1.31	\$1.10		
		3/16"	Field	\$1.58	\$1.22		
		1/4"	Field	\$1.64	\$1.30		
		Plug	Plug	\$2.40	\$2.10		
<i>Eucommia ulmoides</i>	Hardy Rubber Tree	18-24"	ABP	\$2.72	\$2.30		
		2-3'	ABP	\$3.16	\$2.65		
		3-4'	ABP	\$3.61	\$3.01		
<i>Fagus grandifolia</i>	American Beech	1/8"	ABP	\$2.78	\$2.32		
		3/16"	ABP	\$3.33	\$2.59		
		1/4"	ABP	\$3.76	\$2.93		
<i>Fagus sylvatica</i>	European Beech	1/8"	ABP	\$2.46	\$2.04		
		3/16"	ABP	\$2.70	\$2.25		
		1/4"	ABP	\$3.07	\$2.39		

Rooted Cutting Description



JLPN sells many items by the piece, and not by size, due to the fact that the development of the root system is far more critical to a plant's future growth than the height. To clarify the scale, we have provided the following pictures of 25 count, rooted cutting bundles. In all cases, JLPN delivers plants that are healthy and viable, however having two options gives the buyer a little flexibility on price, to fit their growing needs.

0" Rooted Cutting (R/C)



Not Advertised for Sale, zero's are just that, zero new growth. They are fully rooted, but only suitable for containers.

1" - 3" Rooted Cutting (R/C)



1-3" of new growth, and fully rooted. Recommended for growing in container for 1 season, or fields with solid weed control practices.

4"+ Rooted Cutting (R/C)



4"+ of new growth, and fully rooted. All R/C's are topped at a max height of 16". Roots are going to be larger, more durable, and more developed. All plants listed "R/C" are field ready, for transplanting.



NURSERY LOCATION:
5440 State Street
Salem, Oregon 97301

MAILING ADDRESS:
1118 Lancaster Drive NE #409
Salem, Oregon 97301

PHONE:
1-877-490-7844
503-373-9781

FAX:
503-373-9876


EMAIL:
info@jlpnliners.com

WEBSITE:
www.jlpnliners.com

All photos by John Lewis.

						*5,000 Qty. Minimum	
Latin Name	Common Name	Size	Type	1-499	500+	Royalty	B-grade*
<i>Ginkgo biloba</i>	Maidenhair Tree	1/8"	ABP	\$2.64	\$2.04		
		3/16"	ABP	\$2.71	\$2.25		
		1/4"	ABP	\$2.87	\$2.39		
<i>Ginkgo biloba</i> 'Skinny Fit'	Skinny Fit Ginkgo 	graft	Gallon	\$13.95	\$13.95	\$2.80	
<i>Gleditsia triacanthos</i>	Honeylocust	1/8"	Field	\$1.47	\$1.23		\$0.74
		3/16"	Field	\$1.56	\$1.31		\$0.79
		1/4"	Field	\$1.86	\$1.45		\$0.87
		3/8"	Field	\$2.00	\$1.67		\$1.00
<i>Gymnocladus dioica</i>	Kentucky Coffeetree	3-6"	Field	\$1.92	\$1.67		\$1.00
		6-12"	Field	\$2.12	\$1.76		\$1.06
		12-18"	Field	\$2.38	\$1.99		\$1.19
<i>Halesia monticola</i> 'Pink Mountain'	Pink Mountain Silverbell	TC	Plug	\$3.85	\$3.85		
<i>Hamamelis virginiana</i>	Common Witchhazel	1/8"	ABP	\$2.53	\$2.11		
		3/16"	ABP	\$2.86	\$2.38		
		1/4"	ABP	\$3.12	\$2.60		
<i>Hamamelis x intermedia</i> 'Arnold Promise'	Arnold Promise Witchhazel	graft	Gallon	\$12.95	\$12.95		
<i>Hamamelis x intermedia</i> 'Diane'	Diane Witchhazel	graft	Gallon	\$12.95	\$12.95		
<i>Ilex verticillata</i>	Winterberry	Plug	Plug	\$1.35	\$1.35		
<i>Juniperus chinensis</i> 'Hetzii'	Hetzi Juniper	Plug	Plug	\$1.75	\$1.35		
<i>Laburnum anagyroides</i>	Goldenchain Tree	1/8"	Field	\$1.78	\$1.45		\$0.87
		3/16"	Field	\$2.01	\$1.56		\$0.94
		1/4"	Field	\$2.09	\$1.74		\$1.04
<i>Liquidambar styraciflua</i>	American Sweetgum	1/8"	ABP	\$2.53	\$2.11		
		3/16"	ABP	\$2.72	\$2.29		
		1/4"	ABP	\$2.94	\$2.44		
<i>Liquidambar styraciflua</i> 'Slender Silhouette'	Slender Silhouette Sweetgum	graft	Gallon	\$12.95	\$12.95		
<i>Liriodendron tulipifera</i>	Tulip Tree	1/8"	ABP	\$2.57	\$2.17		
		3/16"	ABP	\$2.71	\$2.25		
		1/4"	ABP	\$3.07	\$2.54		
<i>Magnolia kobus</i>	Kobus Magnolia	1/8"	ABP	\$2.93	\$2.43		
		3/16"	ABP	\$3.24	\$2.69		
		1/4"	ABP	\$3.52	\$2.93		
<i>Magnolia virginiana</i>	Sweetbay Magnolia	6-12"	ABP	\$2.78	\$2.32		
		12-18"	ABP	\$2.95	\$2.46		
		18-24"	ABP	\$3.33	\$2.59		
		Plug	Plug	\$2.15	\$1.98		
<i>Magnolia virginiana</i> 'Moonglow'®	Moonglow® Magnolia	RC	ABP	\$3.66	\$2.62	\$0.90	
<i>Magnolia</i> 'Ann'	Ann Magnolia	graft	Gallon	\$15.95	\$15.95		
<i>Magnolia x loebneri</i> 'Leonard Messel'	Leonard Messel Magnolia	graft	Gallon	\$15.95	\$15.95		
<i>Magnolia</i> 'Jane'	Jane Magnolia	graft	Gallon	\$15.95	\$15.95		
<i>Malus</i> 'Dolgo'	Dolgo Crabapple	1/8"	Field	\$1.07	\$0.82		\$0.49
		3/16"	Field	\$1.15	\$0.90		\$0.54
		1/4"	Field	\$1.19	\$0.98		\$0.59
<i>Malus domestica</i>	Common Apple	1/8"	Field	\$1.07	\$0.75		\$0.45
		3/16"	Field	\$1.15	\$0.85		\$0.51
		1/4"	Field	\$1.18	\$0.92		\$0.55
<i>Metasequoia glyptostroboides</i>	Dawn Redwood	ABP	ABP	\$3.21	\$2.67		
<i>Morus alba tatarica</i>	White Mulberry	1/8"	Field	\$2.07	\$1.40		\$0.84
		3/16"	Field	\$1.80	\$1.51		\$0.91
		1/4"	Field	\$2.15	\$1.68		\$1.01
<i>Nyssa sylvatica</i>	Black Gum/ Sour Gum	1/8"	ABP	\$3.07	\$2.39		

Latin Name	Common Name	Size	Type	1-499	500+	Royalty	B-grade*
		3/16"	ABP	\$3.45	\$2.67		
		1/4"	ABP	\$3.48	\$2.93		
<i>Ostrya virginiana</i>	American Hophornbeam	ABP	ABP	\$3.37	\$2.67		
<i>Parrotia persica</i>	Persian Parrotia/Ironwood	RC	ABP	\$3.21	\$2.62		
<i>Parrotia persica</i> 'Persian Spire'®	Persian Spire® Parrotia 	RC	ABP	\$3.21	\$2.62	\$2.80	
<i>Parrotia persica</i> 'Vanessa'	Persian Parrotia 'Vanessa'	RC	ABP	\$3.21	\$2.62		
<i>Picea abies</i>	Norway Spruce	Plug	Plug	\$0.90	\$0.75		
<i>Pinus nigra</i>	Austrian Pine	Plug	Plug	\$0.90	\$0.75		
<i>Pinus strobiformis</i>	Southwestern White Pine	Plug	Plug	\$0.90	\$0.75		
<i>Pinus sylvestris</i>	Scotch Pine	Plug	Plug	\$0.90	\$0.75		
<i>Pistacia chinensis</i>	Chinese Pistache	ABP	ABP	\$3.01	\$2.53		
<i>Platanus x acerifolia</i> 'Bloodgood'	Bloodgood London Planetree	RC	RC	\$2.88	\$2.48		
<i>Platanus x acerifolia</i> 'Columbia'	Columbia London Planetree	RC	RC	\$2.88	\$2.48		
<i>Platanus x acerifolia</i> 'Exclamation'™	Exclamation™ London Planetree	RC	RC	\$2.88	\$2.48	\$1.00	
<i>Populus tremula</i> 'Erecta'	Columnar Swedish Aspen	TC	Plug	\$3.80	\$3.80		
<i>Populus tremuloides</i>	Quaking Aspen	12-18"	Field	\$1.66	\$1.37		\$0.82
		18-24"	Field	\$1.82	\$1.52		\$0.91
		2-3'	Field	\$2.00	\$1.67		\$1.00
<i>Prunus cerasifera</i> 'Krauter Vesuvius'	Krauter Vesuvius Flowering Plum	RC	RC	\$2.65	\$2.21		
<i>Prunus serrulata</i> 'Kwanzan'	Kwanzan Cherry	RC	RC	\$2.65	\$2.21		
<i>Prunus virginiana</i> 'Schubert'	Canada Red Chokecherry	RC	RC	\$2.74	\$2.35		
<i>Prunus x cistena</i>	Purpleleaf Sandcherry	RC	RC	\$2.10	\$1.75		
<i>Pyrus calleryana</i>	Callery Pear	1/8"	Field	\$0.93	\$0.77		\$0.46
		3/16"	Field	\$1.01	\$0.83		\$0.50
		1/4"	Field	\$1.12	\$0.93		\$0.56
		3/8"	Field	\$1.20	\$1.01		\$0.61
<i>Pyrus communis</i>	Common Pear	1/8"	Field	\$1.01	\$0.78		\$0.47
		3/16"	Field	\$1.02	\$0.85		\$0.51
		1/4"	Field	\$1.13	\$0.94		\$0.56
		3/8"	Field	\$1.24	\$1.04		\$0.62
		2yr 3/16"	BG	\$1.37	\$1.19		
		2yr 1/4"	BG	\$1.45	\$1.27		
		2yr 3/8"	BG	\$1.58	\$1.39		
<i>Quercus alba</i>	White Oak	ABP	ABP	\$3.08	\$2.57		
<i>Quercus bicolor</i>	Swamp White Oak	ABP	ABP	\$2.91	\$2.44		
<i>Quercus coccinea</i>	Scarlet Oak	ABP	ABP	\$2.91	\$2.44		
<i>Quercus imbricaria</i>	Shingle/Laurel Oak	ABP	ABP	\$2.91	\$2.44		
<i>Quercus lyrata</i>	Overcup Oak	ABP	ABP	\$2.91	\$2.44		
<i>Quercus macrocarpa</i>	Bur Oak	ABP	ABP	\$2.91	\$2.44		
<i>Quercus muehlenbergii</i>	Chinkapin Oak	ABP	ABP	\$2.91	\$2.44		
<i>Quercus nuttallii</i>	Nuttall Oak	ABP	ABP	\$2.91	\$2.44		
<i>Quercus palustris</i>	Pin Oak	ABP	ABP	\$2.91	\$2.44		
<i>Quercus phellos</i>	Willow Oak	ABP	ABP	\$2.91	\$2.44		
<i>Quercus robur</i>	English Oak	ABP	ABP	\$2.91	\$2.44		
<i>Quercus robur</i> 'fastigiata'	Columnar English Oak	ABP	ABP	\$2.91	\$2.44		
<i>Quercus rubra</i>	Northern Red Oak	ABP	ABP	\$2.91	\$2.44		
<i>Quercus shumardii</i>	Shumard Oak	ABP	ABP	\$2.91	\$2.44		
<i>Robinia pseudoacacia</i>	Black Locust	1/8"	Field	\$1.55	\$1.29		\$0.77
		3/16"	Field	\$1.72	\$1.43		\$0.86

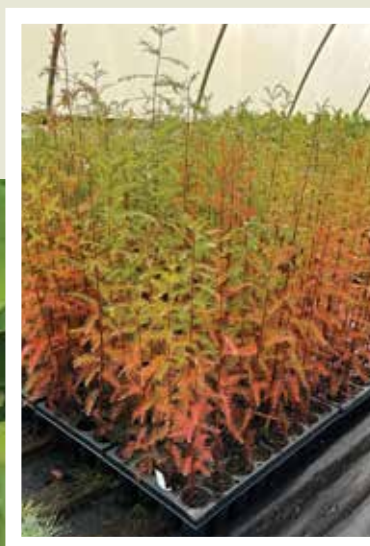
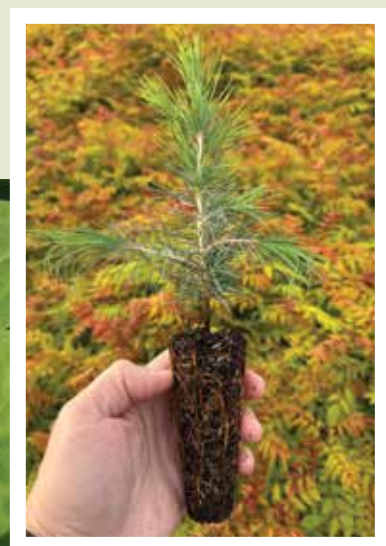
Latin Name	Common Name	Size	Type	1-499	500+	Royalty	B-grade*
		1/4"	Field	\$1.89	\$1.68		\$1.01
<i>Sorbus aucuparia</i>	European Mountain Ash	12-18"	Field	\$1.59	\$1.21		\$0.73
		18-24"	Field	\$1.61	\$1.29		\$0.77
		2-3'	Field	\$1.84	\$1.45		\$0.87
		3-4'	Field	\$1.92	\$1.59		\$0.95
<i>Stewartia pseudocamellia</i>	Japanese Stewartia	12-18"	ABP	\$5.11	\$4.31		
		18-24"	ABP	\$5.60	\$4.65		
		2-3'	ABP	\$6.11	\$5.09		
		3-4'	ABP	\$6.78	\$5.66		
<i>Styrax japonicus</i>	Japanese Snowbell	12-18"	ABP	\$2.46	\$1.89		
		18-24"	ABP	\$2.61	\$2.18		
		2-3'	ABP	\$2.77	\$2.31		
		3-4'	ABP	\$3.04	\$2.53		
<i>Styrax japonicus</i> 'JL Weeping'	Marley's Pink Japanese Snowbell 	graft	Gallon	\$13.95	\$13.95	\$2.80	
<i>Syringa pekinensis</i>	Peking Lilac	1/8"	ABP	\$2.61	\$2.18		
		3/16"	ABP	\$2.87	\$2.39		
		1/4"	ABP	\$3.11	\$2.59		
<i>Syringa reticulata</i>	Japanese Tree Lilac	1/8"	ABP	\$2.61	\$2.18		
		3/16"	ABP	\$2.87	\$2.39		
		1/4"	ABP	\$3.11	\$2.59		
<i>Syringa vulgaris</i>	Common Purple Lilac	1/8"	ABP	\$2.63	\$2.18		
		3/16"	ABP	\$2.85	\$2.36		
		1/4"	ABP	\$3.12	\$2.60		
<i>Taxodium distichum</i>	Bald Cypress	Plug	Plug	\$1.88	\$1.66		
<i>Tilia cordata</i>	Littelleaf Linden	1/8"	Field	\$1.61	\$1.35		\$0.81
		3/16"	Field	\$1.74	\$1.45		\$0.87
		1/4"	Field	\$1.91	\$1.59		\$0.95
		3/8"	Field	\$2.12	\$1.76		\$1.06
		1/8"	ABP	\$2.59	\$2.18		
		3/16"	ABP	\$2.71	\$2.25		
<i>Tilia tomentosa</i>	Silver Linden	1/4"	ABP	\$2.89	\$2.40		
		1/8"	ABP	\$2.59	\$2.12		
		3/16"	ABP	\$2.71	\$2.25		
<i>Ulmus americana</i>	American Elm	1/8"	Field	\$1.35	\$1.21		\$0.73
		3/16"	Field	\$1.51	\$1.37		\$0.82
		1/4"	Field	\$1.68	\$1.52		\$0.91
<i>Ulmus americana</i> 'Princeton'	Princeton American Elm	RC	RC	\$3.74	\$3.22		
		RC 1-3"	RC	\$3.15	\$2.48		
<i>Ulmus parvifolia</i>	Chinese Lacebark Elm	1/8"	Field	\$1.51	\$1.28		\$0.77
		3/16"	Field	\$1.74	\$1.43		\$0.86
		1/4"	Field	\$1.91	\$1.59		\$0.95
<i>Ulmus pumila</i>	Siberian Elm	1/8"	Field	\$1.53	\$1.28		\$0.77
		3/16"	Field	\$1.73	\$1.43		\$0.86
		1/4"	Field	\$1.91	\$1.59		\$0.95
<i>Ulmus x 'Morton Glossy'</i>	Triumph Elm™	TC	Plug	\$3.86	\$3.86	\$1.00	
<i>Zelkova serrata</i>	Japanese Zelkova	1/8"	ABP	\$2.46	\$2.04		
		3/16"	ABP	\$2.61	\$2.18		
		1/4"	ABP	\$2.78	\$2.32		
		2yr 1/8"	Field	\$1.54	\$1.28		\$0.77
		2yr 3/16"	Field	\$1.51	\$1.37		\$0.82
		2yr 1/4"	Field	\$1.86	\$1.55		\$0.93
		2yr 3/8"	Field	\$2.07	\$1.74		\$1.04

Plugs, Cells and Bands



In our past conversations with growers, we collectively identified a need and demand for a product that has a lower entry level price. The robust root system and top growth of a band pot wasn't always a necessity for some growers to achieve their end product on various levels. To answer this need, JLPN started trialing plug and cell grown products these past couple years. We are currently trialing 32 count Redi-Root (air-pruning pot) for deciduous seedlings and Tissue Culture liners and 50 count plugs for conifers. In many products, we utilize Grow-coon container liners, to ensure no loss of soil on the roots, creating 98-100% transplant success. Please let us know if there are products that we currently grow or can grow, in another format, aside from Band Pot grown seedlings.

Latin Name	Common Name	1-499	500+
<i>Acer saccharum (Sugar)</i>	Sugar Maple	\$1.65	\$1.35
<i>Cedrus deodara</i>	Himalayan Cedar	\$0.90	\$0.75
<i>Cercis canadensis</i>	Eastern Redbud	\$1.65	\$1.35
<i>Diospyros virginiana</i>	American Persimmon	\$2.40	\$2.10
<i>Picea abies</i>	Norway Spruce	\$0.90	\$0.75
<i>Pinus heldreichii</i>	Bosnian Pine	\$0.90	\$0.75
<i>Pinus nigra</i>	Austrian Pine	\$0.90	\$0.75
<i>Pinus strobiformis</i>	Southwestern White Pine	\$0.90	\$0.75
<i>Pinus sylvestris</i>	Scotch Pine	\$0.90	\$0.75
<i>Taxodium distichum</i>	Bald Cypress	\$1.88	\$1.66



Tissue Culture Liners



As **JLPN** continues to evolve our product listings, we are now producing tissue culture liners in 32 count Redi-Root cell trays. Many of our growers have requested T/C liners, due to not have the facilities to acclimate and grow T/C on from Stage 3. We are producing these liners for growers in need of custom grown orders and we are producing some additional plants for open availability. If there's a TC product (not necessarily trees) you are needing, but can't find a consistent source, please contact us.

Latin Name	Common Name	1-499	500+	Royalty
<i>Amelanchier x grandiflora</i> 'Autumn Brilliance'	Autumn Brilliance Serviceberry	\$4.25	\$3.95	\$0.90
<i>Betula x 'Alvazam'</i> TM	Avalanche Birch TM 	\$3.85	\$3.85	\$2.60
<i>Halesia monticola</i> 'Pink Mountain'	Pink Mountain Silverbell	\$3.85	\$3.85	
<i>Ulmus x 'Morton Glossy'</i>	Triumph Elm TM	\$3.86	\$3.86	



Grafted Liners



For 20+ years, customers have asked for or requested for JLPN to produce grafted liners. While we never plan on competing with our grafting clientele, we've recognized a strong uptick in market demand for consistent quality coupled with reliable supply. We are just getting started, but JLPN has the capability to expand as our growers' request, through custom orders.

We are producing 1-gallon liners, nothing larger. Please contact us and let us know what varieties you are having challenges on quality, reliable supply.



Latin Name	Common Name	1-499	500+	Royalty
<i>Acer palmatum</i> 'Hot Chana' TM	Hot Chana Japanese Maple TM 	\$12.95	\$12.95	\$2.80
<i>Acer palmatum</i> 'Metamorphosa' [®]	Metamorphosa Japanese Maple [®] 	\$12.95	\$12.95	\$2.80
<i>Acer palmatum</i> 'Shishigashira'	Shishigashira Japanese Maple	\$12.95	\$12.95	
<i>Cornus florida</i> 'Cherokee Chief'	Cherokee Chief Dogwood	\$12.95	\$12.95	
<i>Cornus florida</i> 'Cloud Nine'	Cloud Nine Dogwood	\$12.95	\$12.95	
<i>Cornus florida</i> <i>rubra</i>	Pink Flowering Dogwood	\$12.95	\$12.95	
<i>Cornus kousa</i> 'Celestial Shadow'	Celestial Shadow Dogwood	\$12.95	\$12.95	
<i>Cornus kousa</i> 'Summer Fun'	Summer Fun Dogwood	\$12.95	\$12.95	
<i>Ginkgo biloba</i> 'Skinny Fit' [®]	Skinny Fit Ginkgo [®] 	\$13.95	\$13.95	\$2.80
<i>Hamamelis x intermedia</i> 'Arnold Promise'	Arnold Promise Witchhazel	\$12.95	\$12.95	
<i>Hamamelis x intermedia</i> 'Diane'	Diane Witchhazel	\$12.95	\$12.95	
<i>Liquidambar styraciflua</i> 'Slender Silhouette'	Slender Silhouette Sweetgum	\$12.95	\$12.95	
<i>Magnolia</i> 'Ann'	Ann Magnolia	\$15.95	\$15.95	
<i>Magnolia x loebneri</i> 'Leonard Messel'	Leonard Messel Magnolia	\$15.95	\$15.95	
<i>Magnolia</i> 'Jane'	Jane Magnolia	\$15.95	\$15.95	
<i>Styrax japonicus</i> 'JL Weeping'	Marley's Pink Japanese Snowbell 	\$13.95	\$13.95	\$2.80

Automation at JLPN



Since '2013 JLPN has aggressively pursued automation with the initial addition of our Wurdinger Planting line. In 2023, we added an Urbinati seeding line to increase our germination rates, and space-use efficiency in the greenhouse. This year we acquired a TTA tree seedling transplanter. This new addition will increase the speed and precision transplanting of our products from cell tray and ellepots germinated seeds, to plug-grown, and band pot grown seedlings. While we can't use this robot for all products, it's a huge leap forward in creating value added product and efficiency at JLPN.



